



Hunan Runmei Gene Technology Co.,Ltd.

SARS-CoV-2 (COVID-19) Antigen Rapid Detection Kit

Product Description



Composition:

SARS-CoV-2 Test Strip, Disposable Sampling Tube (with sample diluent buffer), Collection Cup, Transfer Pipette, Specimen Collection Swab

Package Specifications: 1 test/box, 20 tests/box

Packing: Paper, Foil pouch

Storage temperature: 4°C- 30°C

Period of validity: 12 Months

Intended Use

This kit is intended to be used for the qualitative detection of SARS-CoV-2 antigen in human saliva. This kit uses cellulose membrane immunochromatography technology. Antigen detection is used for auxiliary diagnosis or epidemiological investigation of human infection with SARS-CoV-2.

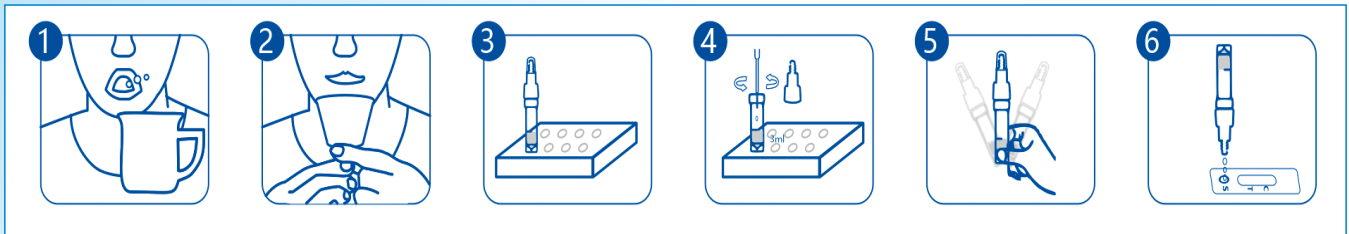
Principle

The kit adopts cellulose membrane immunochromatography technology and applies the principle of membrane chromatography double antibody sandwich method to detect the SARS-CoV-2 antigen in human samples. The product consists a sample well and detection area on the Detection Strip. The Detection strip contains coated anti-SARS-CoV-2 monoclonal antibody, colloidal gold particles labeled with anti-SARS-CoV-2 monoclonal antibody, and goat anti-mouse polyclonal antibody. When SARS-CoV-2 antigens are present in the sample, the SARS-CoV-2 antigen will combine with the colloidal gold-labeled anti-SARS-CoV-2 monoclonal antibody, it will be captured by the coated anti-SARS-CoV-2 monoclonal antibody. When the viral antigen cross the T region of detection line, it will be captured by the coated anti-coronavirus monoclonal antibody, which will gather and develop color in the detection area. Conversely, if SARS-CoV-2 antigens are not present in the sample or the antigen titer is below the limit of detection, there will be no color band appears on the detection line and the result will be negative. Regardless of whether the sample contains antigens of the SARS-CoV-2, a color band should appear on the quality control region (C region) line of the detection area.

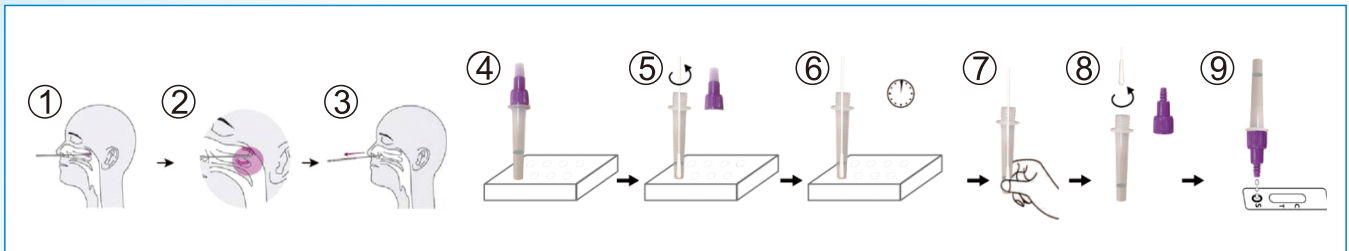


Operation Steps

Saliva collection



Nasal swab collection



RESULTS ANALYSIS

The interpretation of visual interpretation results (as shown below):

1. The results can be read directly by naked eyes as shown in the figures below: Positive result: a visible band can be seen in both line C and line T.



2. Negative result: A visible band can be seen in line C only.



3. Invalid result: A visible band cannot be seen in line C, and the test must be repeated using a new strip.



Hunan Runmei Gene Technology Co., Ltd.

Address: Room401, Building No.3 in ChangSha Medical and Health Industrial Park, No.1048 Zhong Qing Road, Kai Fu District, ChangSha, HuNan Prov, P.R.China

Tel: (+86)-731-89919680/(+86)-18601451556

E-mail: sales@runmeigene.com

Website: www.runmeigene.com



Make me your WeChat friend